



Drylac®
Powder Coatings

Metallics & Special Effects

metallic and special effect powder coatings | Volume 2



Vol. 2

Metallic surface finishes for exterior and interior applications

This color card combines popular exterior and interior **Metallic** 2nd Generation Bonded Metallic powder coatings, engineered with the designer, the coater, and the OEM in mind.

TIGER Drylac® 2nd Generation Bonded Metallics are manufactured in-house using an advanced proprietary technology 2nd Generation Bonding process that produces superior quality and a high degree of color consistency during the application process.

2nd generation bonded metallic surface finishes offer unique benefits including batch-to-batch consistency, recyclability, a uniform / flawless finish, high first pass transfer efficiency and low gun settings leading to less equipment wear. With **TIGER Drylac® Metallics**, there is no need for special equipment during application, no dry spray, clouding, stripping or picture framing and most importantly, metallic particles do not segregate during transportation and storage.

For proper application of 2nd Generation Bonded Metallic surface finishes, it is recommended to carefully read the “Guidelines for application of metallic powder coatings” and adhere to its contents. This document is downloadable from TIGER’s website.

Surface finishes designed for **exterior applications** are also suitable for interior applications. Surface finishes designed for interior **applications (Series 09, Series 69)** do not offer adequate UV resistance for exterior applications. Applying a clear topcoat will not increase its UV resistance.

Antique/Vein

Polyester/epoxy and polyester-based textured metallic surface finishes (also known as antique or vein) in **TIGER Drylac® Series 09, Series 49** and **Series 59** are a simple solution to hide uneven surfaces. They are easy to maintain and add visual dimensional layers to objects that otherwise show no texture. While antique/vein surface finishes in Series 09 require a clear topcoat to increase durability and chemical resistance, in Series 49 and 59 they do not require a clear topcoat.

Anodized Effect

Anodized effect is a line of super durable polyester TGIC-free AAMA 2604-compliant powder coatings developed to emulate anodized finishes. The finishes are formulated for aluminum extrusions, cast pieces and other ferrous and nonferrous substrates. They are suitable for Corona and Tribo application equipment.

Brilliant Reflective

Brilliant reflective surface finishes such as **TIGER Drylac® Mirror Silver 49/91260, Chrome OGF 49/91312** and **Kromezone 49/95001** are high performance finishes. The extreme brilliance of this type of finish relies on the high flow and smoothness of the base powder coating and the perfect alignment of metallic particles at the surface. Substrate surface impurities will appear as noticeable protrusions, therefore cleanliness of the substrate before application is critical. Any substrate surface imperfections as well as impurities or metal shavings will be clearly visible. These surface finishes require a clear topcoat to protect the thin layer of aluminum flake.

Dormant Transparent

Deep and dynamic finishes are obtained through the application of two coats. The Dormant effect will only evolve after the application of a clear topcoat. Swatches in this card use **TIGER Drylac® Bengal Clear Glossy 49/01234**. Additional eye-catching finishes can be achieved by using other **TIGER Drylac®** clear coats and clear glitters such as **TIGER Drylac® Silver 49/00320** or **Twilight 49/00390**. These finishes are suitable for Corona application equipment. Best inter-coat adhesion is achieved by applying the basecoat using Corona and the clear topcoat using Tribo equipment.

Glitter

These polyester-based finishes contain sparkling metallic flakes suspended in a clear coat. They can be applied over any base coat color, and provide a high range of effects by just changing the base coat color. The **Twilight** version, **TIGER Drylac® 49/00390** provides multiple-color sparkles to any color.

Hammertone

Hammertone finishes look as if the surface was textured with a ball-peen hammer. The undulated contrast created by the underlying base color adds texture to the finish. To obtain an adequate film thickness in the valleys of the texture, minimum film thickness guidelines must be observed. Hammertone finishes are suitable for Corona application equipment.

Iron glimmer

Polyester-based smooth and fine textured surface finishes provide a metallic look while containing little or no metallic pigments. They are ideal for one-coat finishing solutions.

Pearlescent

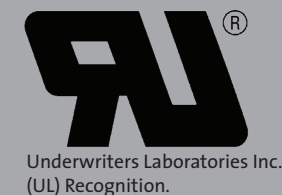
Polyester-based surface finishes containing mica pigments offer reflective metallic values reminiscent of natural pearls. They provide luster and shine.

Outgassing Forgiving (OGF) properties

OGF powder coatings are developed for casting, hot galvanized and forged steel, aluminum flame-sprayed and other porous and outgassing prone substrates. OGF additives can be added to any **TIGER Drylac®** powder coating. However, for large volumes, it is recommended to produce the powder coating in an OGF formulation on a custom order basis.

2nd generation bonded metallic surface finishes exhibited in this color card include:

interior applications	Epoxy/polyester (hybrid)	Series 09
	Epoxy	Series 69
interior and exterior (non-architectural) applications	Polyester TGIC	Series 39 Series 49
	Polyester TGIC-Free	Series 59 Series 139 Series 149
	Polyester urethane	Series 44
	Polyester TGIC Super Durable	Series 38
exterior (architectural) applications	Polyester TGIC-free Super Durable	Series 61 Series 138



Disclaimer

Color swatches featured in this color chart have been matched to color standards at a **45-degree visual angle under a D65 Daylight** primary source. RAL numbers are matched as approximate as possible to the RAL Standards. Gloss level on metallic and fine textured swatches cannot be accurately measured.

The swatches are to be considered as an indication only. In practice, discrepancy between the color swatch and the actual powder coating may arise. This is due to paper and ink limitations, the influence of light and heat during the color chart production, as well as gloss level, substrate, surface variations, binder systems and pigments, coating thickness and cure oven conditions used during application.

For an accurate color and finish assessment, it is recommended to obtain a powder coated sample panel from **TIGER Drylac®**.

Please contact **TIGER Drylac®** for more information if using the following products found in this chart in a two-coat system consisting of a primer or e-coat base coat.

Products marked with RED text: Limited stock is available, please consult the stock indicator on our Webshop or contact TIGER at 1 (800) 243-8148. Once stock is depleted, product will be moved to Custom Order and minimum quantities of 500 kg/1,100 lb will apply.



anodized effect | 61/78003
Champagne



**anodized effect | 61/78002
Light Bronze**



**matte | 49/15240
Beige C32 One Coat**



fine texture | 38/68130
Greco



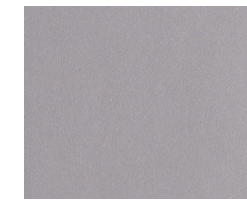
anodized effect | 61/68002
Medium Bronze



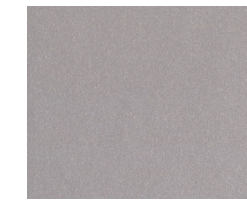
anodized effect | 61/00015
Silver (clear)



matte | 49/90500
Silver Matte



glossy | 49/92790
No-Smudge Silver



glossy | 49/90380
Standard Silver *|***



glossy | 49/99999
Bengal Silver ***



matte | 49/66230
Brown C33 One Coat



**glossy | 09/60610
Beige Metallic
Interior only**



matte | 09/68635
High Lights Bronze
Interior only



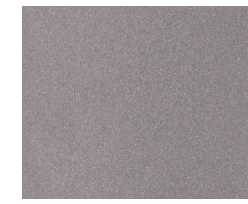
matte | 49/61120
Low Lights Bronze



matte | 49/66220
Bronze C34 One Coat



glossy | 49/90450
Sparkle Silver **|***



glossy | 49/93061
Stardust Silver Dark Metallic



glossy | 38/90080
Brilliant Sparkle Silver **|***



**glossy | 59/93370
APRX to RAL 9006 Gloss One Coat**



brilliant reflective | 49/95001
Kromezone *



designer finish | 49/60015
Pyrite Fine Texture



fine texture | 59/91611
Oil Rubbed Bronze Fine Texture



anodized effect | 61/68001
Dark Bronze



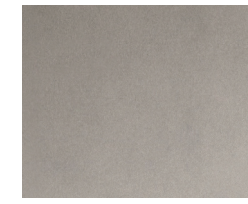
matte | 39/60020
Bronze Matte



fine texture | 09/68560
Rustico
Interior only



brilliant reflective | 49/91260
Mirror Silver *



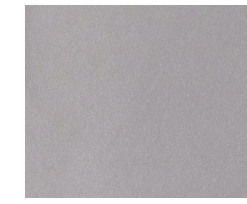
brilliant reflective | 49/91312
Chrome OGF *|***



fine texture | 09/90530
Silver Fine Texture
Interior only



glossy | 138/91021
Anodized Silver



matte | 69/91390
Epoxy Silver Matte *
Interior only



glossy | 09/80170
Anthracite Metallic
Interior only



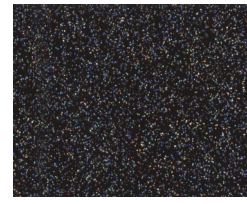
fine texture | 418/79680
Anthracite Metallic



matte | 09/60600
Bronze Metallic
Interior only



fine texture | 38/68192
Gold Brown



**glitter | 149/90009
Black Stardust ****



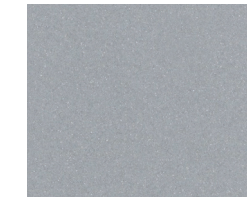
matte | 49/92910
APRX to RAL 9006 Matte One Coat



glossy | 139/90000
Silver



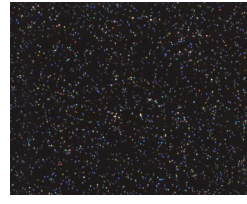
pearlescent | 149/18140
Pearlescent White ***



glossy | 49/92890
APRX to RAL 9006 Gloss One Coat



**glossy | 38/90010
Marine Silver One Coat**



**glitter | 49/00390
Twilight (top coat) ****
(Black 49/82830 base coat)



**glitter | 49/00320
Silver (top coat) ****
(Black 49/82830 base coat)



glimmer smooth | 49/70190
P 2 Glimmer



glimmer smooth | 49/70200
P 3 Glimmer



glimmer smooth | 49/70220
P 4 Glimmer



matte | 49/92380
Silver Matte One Coat



glossy | 38/97445
Starline Silver



**glossy | 09/80340
Grey Metallic ***
Interior only



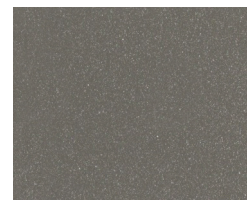
glossy | 59/95726
Gun Metal



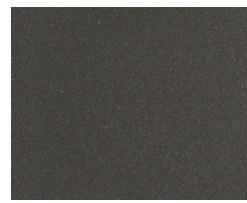
pearlescent | 38/90015
Pearl Dark Grey



glimmer smooth | 49/80180
P 5 Glimmer



glimmer smooth | 49/70210
P 6 Glimmer



glimmer smooth | 49/80190
P 7 Glimmer



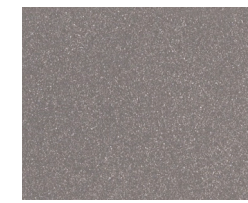
glimmer smooth | 49/70230
P 14 Glimmer



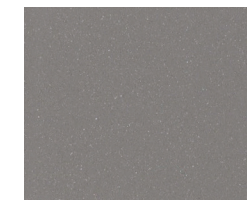
**glimmer smooth | 49/77790
DB 702 Glimmer**



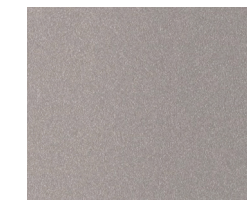
glossy | 49/92900
Silver Gloss One Coat



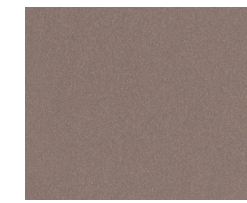
**glossy | 09/90460
APRX to RAL 9007 Gloss Silver
Interior only**



glossy | 49/92880
APRX to RAL 9007 Silver Gloss



glossy | 49/91558
Twinkle



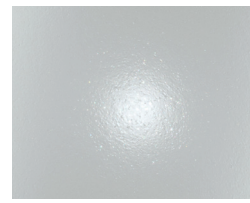
glossy | 49/96114
Satin Nickel *

Products marked with RED text: Limited stock is available, please consult the stock indicator on our Webshop or contact TIGER at 1 (800) 243-8148. Once stock is depleted, product will be moved to Custom Order and minimum quantities of 500 kg/1,100 lb will apply.

**NEW
COLLECTION**



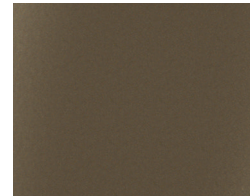
glossy | 44/91501
Plata Focaris 62



semi gloss | 149/93010
Starburst Silver



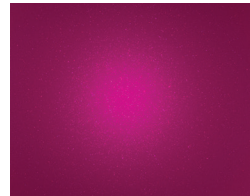
glossy | 149/99010
Silver Ore *



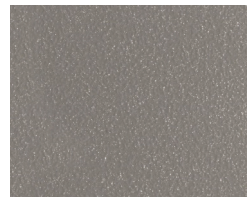
satin | 138/68195
Sun Kissed Bronze



dormant transparent | 59/48001
Ice Blue ▲▲



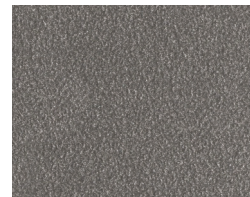
dormant transparent | 59/38002
Raspberry ▲▲



glimmer fine texture | 49/70789
DB 702 Fine Texture Glimmer



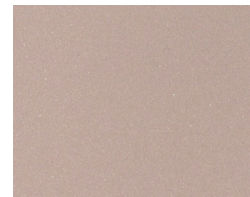
glimmer smooth | 49/84340
DB 703 Glimmer



glimmer fine texture | 49/70785
US 1 Fine Texture Glimmer



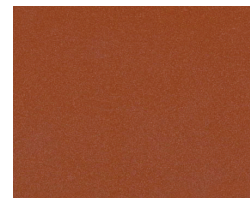
glimmer fine texture | 49/70787
US 2 Fine Texture Glimmer



glossy | 38/15020
Champagne 303



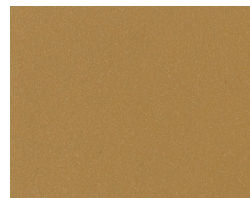
matte | 49/92780
Copper Metallic *



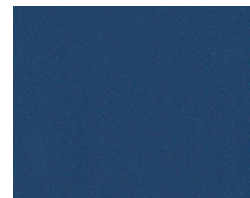
pearlescent | 38/60064
Pearl Copper



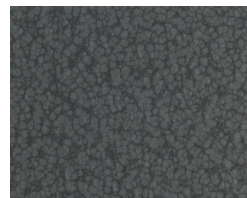
fine texture | 09/68420
Sandblast Copper ***
Interior only



glossy | 49/90137
Sahara Gold *



pearlescent | 38/40127
Pearl Night Blue



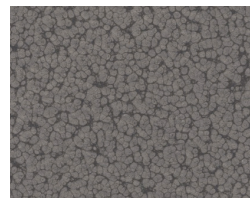
hammertone | 39/80005
Black



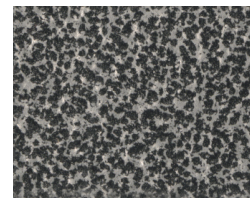
antique/vein | 09/90170
Grey Hybrid *
Interior only



hammertone | 39/90980
Light Silver



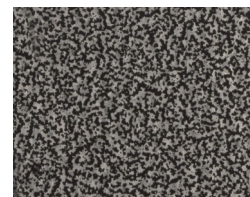
hammertone | 39/90020
Silver



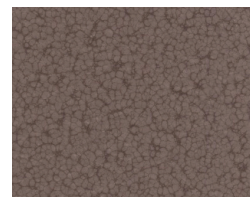
antique/vein | 59/90820
Antique Silver Metallic



antique/vein | 49/93240
Silver Hybrid *
Interior only



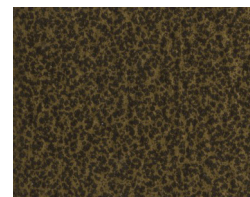
antique/vein | 09/90190
Silver Hybrid *
Interior only



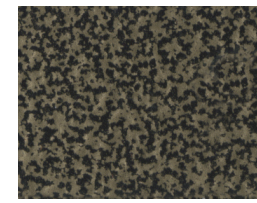
hammertone | 39/60002
Sepia



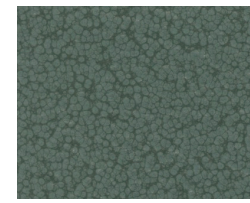
hammertone | 39/90280
Gold Brown



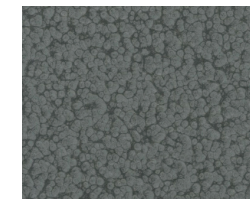
antique/vein | 49/91190
Gold



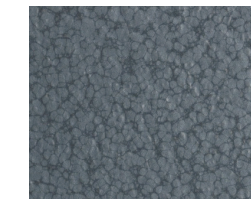
antique/vein | 59/90050
Antique Bronze Metallic



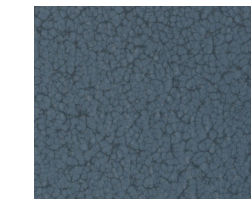
hammertone | 39/40003
Malachite



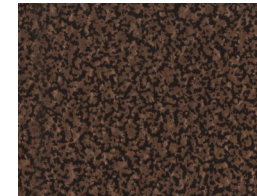
hammertone | 39/50002
Reseda



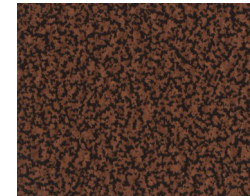
hammertone | 39/40002
Sapphire



hammertone | 39/40750
Capri



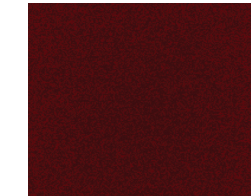
antique/vein | 09/90180
Copper Hybrid *
Interior only



antique/vein | 49/90620
Copper



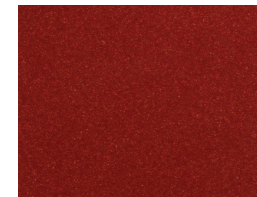
antique/vein | 59/90821
Antique Copper Metallic



dormant transparent | 49/30193
Sparkle Burgundy ▲▲



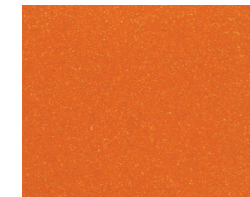
dormant transparent | 49/30028
Sparkle New Red ▲▲



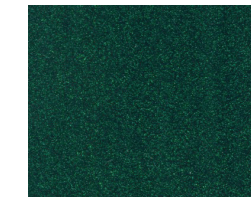
dormant transparent | 49/25002
Sparkle Copper ▲▲



dormant transparent | 49/23531
Sparkle Bomber Orange ▲▲



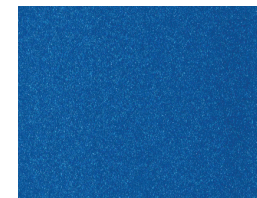
dormant transparent | 49/25006
Sparkle Light Orange ▲▲



dormant transparent | 49/50024
Sparkle Green ▲▲



dormant transparent | 49/50032
Sparkle Granny Smith ▲▲



dormant transparent | 49/40074
Sparkle Sky Blue ▲▲



dormant transparent | 49/40233
Sparkle Electric Blue ▲▲



dormant transparent | 49/40940
Blue ▲▲



dormant transparent | 49/41100
Violet ▲▲

Metallics

- * To increase durability and chemical resistance, TIGER Drylac® recommends the application of a clear topcoat for interior and exterior applications.
- ** To enhance the depth of the finish, TIGER Drylac® suggests the application of a clear top coat.
Recommended clear top coats | For interior: Clear Flat Matte epoxy 69/00300 | **For exterior and interior:** Clear Matte acrylic hybrid 16/00030 | Clear Satin polyester TGIC 49/00280 | Clear Glossy polyester TGIC 49/00530 | Bengal Clear Glossy polyester TGIC 49/01234 | Clear Glossy polyester TGIC super durable 38/00001 | Anti-graffiti Clear Glossy polyester-urethane 44/00018 | Antimicrobial Clear 44/00100.
- *** Due to semi transparency of the product, the opacity of the color and finish will depend upon the substrate type and the film thickness. A film below 2.8 mils will exhibit limited hiding.

Special Effects

- ▲ Candy transparent and one-coat fluorescent finishes provide limited hiding, and the color will be influenced by the thickness of the coating or the color of the substrate/base coat. Candy transparent and fluorescent finishes have limited UV stability..
- ▲▲ Two-coat dormant transparent system. Applied as basecoat and a clear glossy topcoat | Recommended clear topcoats for interior and exterior: Clear Flat Matte acrylic hybrid 16/00030 | Geronimo satin polyurethane 44/00049 | Clear Semi Matte polyester TGIC 49/00280 | Bengal Clear Glossy polyester TGIC 49/01234 | Clear High Gloss SD polyester TGIC super durable 38/00001 | Clear Anti-Graffiti Glossy polyurethane 44/00018 | Antimicrobial Clear 44/00100.
- ▲▲▲ Two-coat fluorescent system. Applied over a high gloss smooth such as White Base Coat 49/11000 or Bengal White 149/11111.

ONLINE VERSION: The colors/effects shown here will deviate from the original color/effect due to screen technology.

High performance special effects for exterior and interior applications

This color card displays a collection of special effect finishes intended to provide a distinctive surface appearance while protecting the substrate.

Candy Transparent

Is a range of transparent topcoats with a candy effect. Colors shown in this color card are representative of coatings on aluminum substrates. Substrates such as steel, chrome and brushed aluminum are also suitable for use with this finish. To achieve an equal finish with other substrates, it is recommended to use a shiny metallic effect as a basecoat, such as **TIGER Drylac® Mirror Silver 49/91260**, **Kromezone 49/95001**, **Chrome OGF 49/91312** or **Sparkle Silver 49/90450**. Candy transparent finishes are suitable for Corona and Tribo application equipment. Candy transparent finishes provide limited hiding and have limited UV stability.

Designer Finish

Designer finish is a line developed with furniture and lighting designers in mind. These finishes provide a classic look in two or three-tone colors and textures simulating the oxidation of copper, natural rocks, and stones. They are suitable for Corona application equipment.

Flourescent

Flourescent finishes are available as one-coat or two-coat systems. In a two-coat system, the flourescent powder coating must be applied over a smooth high gloss white such as **TIGER Drylac® White Basecoat 49/11000**. To achieve a custom look, the flourescent finish can also be applied over **TIGER Drylac® Mirror Silver 49/91260**, **Kromezone 49/95001** or **Sparkle Silver 49/90450**. Flourescent finishes are suitable for Corona and Tribo application equipment. One-coat flourescent finishes provide limited hiding. One-coat and two-coat flourescent finishes have limited UV stability.

TIGER Drylac® standard and custom-colors in **Series 39** and **Series 49**; made in the USA, Canada and Mexico, are periodically recertified and carry the UL (Underwriter Laboratory) Recognized Component Mark (Spec DTOV2.MH27573).

Special effects powder coatings in this color chart include:



Underwriters Laboratories Inc.
(UL) Recognition.

interior and exterior
(non-architectural) applications

Polyester urethane Series 44

Polyester TGIC Series 49

Polyester TGIC-Free Series 59
Series 149

exterior (architectural) applications Polyester TGIC-free Super Durable Series 61

Products marked with RED text: Limited stock is available, please consult the stock indicator on our Webshop or contact TIGER at 1 (800) 243-8148. Once stock is depleted, product will be moved to Custom Order and minimum quantities of 500 kg/1,100 lb will apply.

SPECIAL EFFECTS



candy transparent | 49/20180
Brass ▲



candy transparent | 49/20170
Gold ▲



candy transparent | 49/63130
Copper ▲



candy transparent | 49/31570
Candy Raspberry ▲



candy transparent | 49/33340
Candy Red ▲



candy transparent | 49/35810
Transparent Red ▲



candy transparent | 49/54810
Candy Lime Green ▲



candy transparent | 49/55730
Transparent Green ▲



candy transparent | 49/42130
Candy Teal ▲



candy transparent | 49/46110
Transparent Blue ▲



candy transparent | 49/43600
Candy Blue ▲



candy transparent | 149/41480
Candy Purple ▲



candy transparent | 49/80375
Black Smoke Transparent ▲



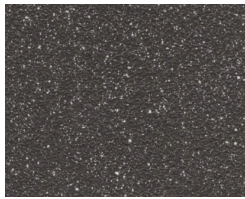
candy transparent | 49/80924
Black Smoke Transparent Matte ▲



anodized effect | 61/80079
Black



designer finish | 44/10033
Quartzite Design Texture Matte



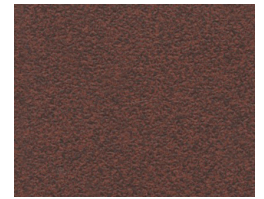
designer finish | 44/80026
Graphite Design Texture Matte



designer finish | 49/62711
Rust Fine Texture



designer finish | 44/60034
Breccia Design Texture Matte



designer finish | 44/60035
Lava Design Texture Matte



fluorescent two-coat | 49/30760
Red ▲ | ▲▲▲▲



fluorescent one-coat | 49/24620
Red Orange ▲



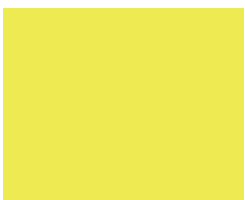
fluorescent one-coat | 49/24610
Orange ▲



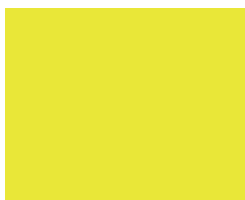
fluorescent two-coat | 49/24080
Orange ▲ | ▲▲▲▲



fluorescent one-coat | 49/22200
Yellow ▲



fluorescent one-coat | 59/20043
Neon Yellow ▲



fluorescent two-coat | 49/21500
Yellow ▲ | ▲▲▲▲



fluorescent one-coat | 49/51340
Green ▲



fluorescent one-coat | 59/30075
Neon Pink ▲



fluorescent two-coat | 49/30430
Bright Pink ▲ | ▲▲▲▲

TIGER WORLDWIDE NETWORK



Check out the TIGER Drylac® Webshop!
Order stock and standard products online!
For more information visit our website.

tiger-coatings.com



US/Canada: 1 (800) 243-8148
Mexico: 01 (800) 368-4437