

TIGER Drylac® Series 138 is available in smooth glossy finish (gloss level 80-95) in the following RAL colors as standard-products and custom-products (minimum order quantity applies). Please contact **TIGER Drylac®** for more information:

RAL color	Product ID	RAL color	Product ID	RAL color	Product ID	RAL color	Product ID	RAL color	Product ID
RAL 1001	138/15001	RAL 6001	138/50005	RAL 6029	138/50029	RAL 7026	138/70026	RAL 8008	138/60008
RAL 1002	138/20002	RAL 6003	138/50003	RAL 6032	138/50032	RAL 7030	138/70027	RAL 8011	138/60011
RAL 1013	138/10013	RAL 6004	138/50004	RAL 6033	138/50033	RAL 7031	138/70031	RAL 8012	138/60012
RAL 1014	138/15014	RAL 6005	138/50002	RAL 6034	138/50034	RAL 7032	138/70001	RAL 8014	138/60010
RAL 1015	138/15015	RAL 6006	138/50006	RAL 7000	138/70000	RAL 7033	138/70033	RAL 8016	138/60016
RAL 1016	138/20016	RAL 6007	138/50007	RAL 7001	138/70130	RAL 7035	138/70035	RAL 8017	138/60017
RAL 1019	138/15019	RAL 6008	138/50008	RAL 7002	138/70007	RAL 7036	138/70036	RAL 8019	138/60019
RAL 1024	138/20024	RAL 6009	138/50009	RAL 7004	138/70004	RAL 7037	138/70037	RAL 8022	138/60022
RAL 3012	138/30012	RAL 6011	138/50011	RAL 7005	138/70005	RAL 7038	138/70038	RAL 8024	138/60024
RAL 5004	138/40004	RAL 6012	138/50012	RAL 7006	138/70006	RAL 7039	138/70039	RAL 8025	138/60025
RAL 5007	138/40007	RAL 6013	138/50013	RAL 7009	138/70009	RAL 7040	138/70046	RAL 8028	138/60028
RAL 5008	138/40008	RAL 6016	138/50016	RAL 7010	138/70014	RAL 7042	138/70042	RAL 9001	138/10001
RAL 5009	138/40009	RAL 6017	138/50017	RAL 7011	138/70011	RAL 7043	138/70043	RAL 9002	138/10002
RAL 5011	138/40011	RAL 6018	138/50018	RAL 7012	138/70012	RAL 7044	138/70044	RAL 9003	138/10003
RAL 5013	138/40013	RAL 6019	138/50019	RAL 7013	138/70013	RAL 7045	138/70045	RAL 9004	138/80004
RAL 5017	138/40017	RAL 6020	138/50020	RAL 7015	138/70015	RAL 7046	138/70817	RAL 9005	138/80010
RAL 5018	138/40020	RAL 6021	138/50021	RAL 7016	138/70016	RAL 7047	138/70047	RAL 9010	138/10004
RAL 5019	138/40019	RAL 6022	138/50022	RAL 7021	138/70021	RAL 8001	138/60005	RAL 9011	138/80001
RAL 5020	138/40018	RAL 6026	138/50026	RAL 7022	138/70022	RAL 8002	138/60002	RAL 9016	138/10010
RAL 5021	138/40021	RAL 6027	138/50027	RAL 7023	138/70827	RAL 8004	138/60004	RAL 9017	138/80017
RAL 6000	138/50000	RAL 6028	138/50028	RAL 7024	138/70024	RAL 8007	138/60007	RAL 9018	138/10018

TIGER Drylac® Series 138 is available in a matte finish (gloss level 20-30) in the following RAL colors as standard-products:

RAL color	Product ID	RAL color	Product ID	RAL color	Product ID	RAL color	Product ID	RAL color	Product ID
RAL 1013	138/15010	RAL 7011	138/70415	RAL 7035	138/72160	RAL 7044	138/70411	RAL 9005	138/80430
RAL 1019	138/15370	RAL 7012	138/79660	RAL 7037	138/70349	RAL 8014	138/62090	RAL 9010	138/10020
RAL 5009	138/47310	RAL 7016	138/73570	RAL 7038	138/70276	RAL 8019	138/62060	RAL 9011	138/81930
RAL 5011	138/41930	RAL 7021	138/70065	RAL 7039	138/73213	RAL 8028	138/63930	RAL 9016	138/10999
RAL 5013	138/49940	RAL 7022	138/70068	RAL 7040	138/73330	RAL 9001	138/10660		
RAL 5017	138/40360	RAL 7024	138/70060	RAL 7042	138/70215	RAL 9002	138/71750		
RAL 7001	138/77900	RAL 7032	138/70062	RAL 7043	138/74700	RAL 9003	138/10268		

The living global TIGER network at your service.



Production facilities

Austria | Canada | China | Mexico | U.S.A. | Vietnam

Affiliated companies and distribution

Europe

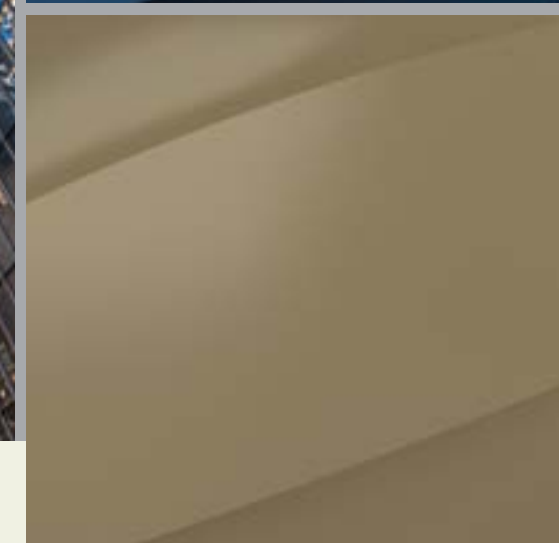
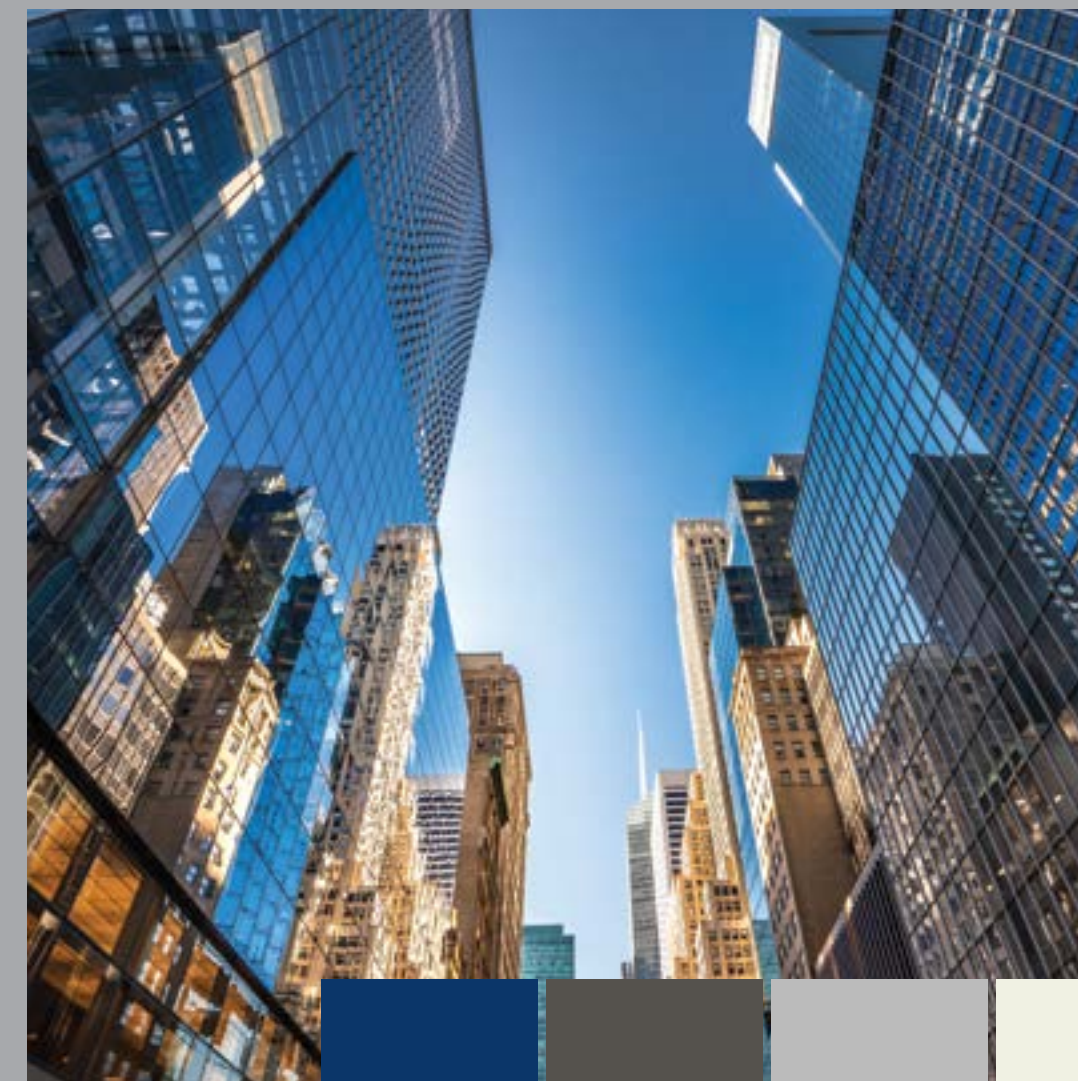
Austria | Belarus | Benelux | Bosnia & Herzegovina | Bulgaria | Croatia | Czech Republic | Estonia | France | Germany | Great Britain | Greece | Hungary | Italy | Latvia | Lithuania | Macedonia | Poland | Romania | Serbia & Montenegro | Slovakia | Slovenia | Spain | Switzerland | Turkey | Ukraine

The Americas

Canada | Mexico | U.S.A.

Asia

China | India | Japan | Taiwan | Vietnam



Super Durable Super Durable Powder Coatings | Vol 3

VOL. 3

Super Durable powder coatings for exterior and interior applications

TIGER Drylac® features a full line of Super Durable high-performance powder coatings intended for architectural applications such as metal façades, steel construction, stadium seating, railings, residential window & door frames and more. **TIGER Drylac® Super Durable** products are also suitable for applications where extreme weather resistance is required such as agricultural & construction equipment, military (Army and Navy) equipment, communication towers, playground equipment, patio furniture and garden equipment.

Please note the following **TIGER Drylac®** series include **Super Durable** products:

- Series 38 Super Durable polyester
- Series 138 Super Durable TGIC-Free polyester
- Series 61 Super Durable Anodized Effect polyester TGIC-Free
- Series 68 Super Durable TGIC-Free polyester

NEW – Series 138

TIGER Drylac® Series 138 are **TGIC-Free Super Durable** powder coatings with “Flex Cure”, a uniquely designed flexible curing technology to accommodate a quicker crosslinking of the chemistry. **Series 138** powder coatings feature reliable performance according to AAMA 2604 specifications.

TIGER Shield system

This two-coat system consists of a corrosion protective primer as a base coat and an opaque weather resistant topcoat. It is used to achieve excellent corrosion resistance in harsh environments.

TIGER Drylac® Dryprotector, (69/70000), Zinc-Rich Primer (69/90500 – 69/90701 in Canada only) and **Zinc-Free OGF Primer (09/73841)** are primers recommended to achieve an optimum nonporous film. For additional information on the application of the **TIGER Shield** system, refer to the latest Product Data Sheets for these primers, which can be found on the **TIGER Coatings** website.

Bureau of Land Management (BLM) Standard Environmental Colors

The US Bureau of Land Management Standard Environmental Colors were developed by government to minimize visual contrast with background landscaping and ensure proper color selection for facilities. **TIGER Drylac® Super Durable** products in BLM colors are compliant with US government standards due to their outstanding weather and UV resistance, engineered to withstand extended exposure to harsh environments. Please consult with your sales representative for additional product availability.

3D Metallic Powder Coatings

TIGER Coatings now offers previously unimaginable metallic finishes which are achievable in a single coat application with the introduction of **3D Metallic Powder Coatings**, available in **Super Durable** chemistries. These innovative finishes feature breathtaking, three-dimensional metallic effects with stunning depth, spatial clarity, and unsurpassed brightness.

New Products – Super Durable Fine Textures, Metallic Glimmer

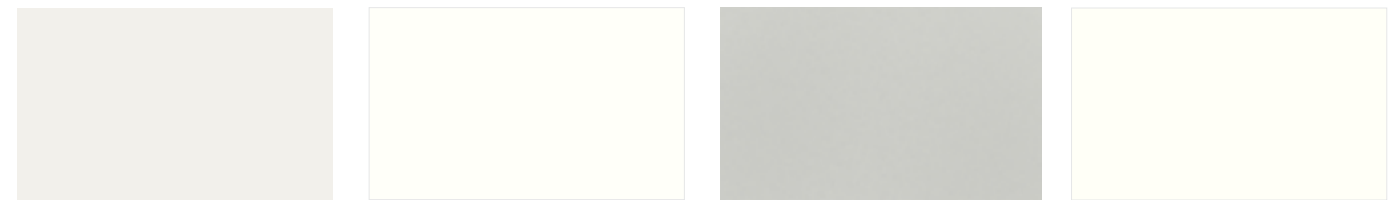
TIGER Drylac® introduces several new finish technologies with the publication of this brochure. Durable **fine textures** offer robust tactile responses with a sand-like texturing. The resulting finish offers a calming response with human touch as they mimic surfaces we encounter within our natural surroundings.

TIGER Drylac® is also pleased to introduce our popular **Glimmer Metallic** finishes in architectural grade chemistries. Luxurious metallic finishes with hues ranging from aged concrete to gun metal steel, matching rich esthetics with superior durability for your exterior application.

TIGER Drylac® Color Cards

Additional **TIGER Drylac®** Color Cards include: 3D Metallics, RAL Colors + Textured and Smooth, Metallics & Special Effects.





glossy | 138/10007
Bianco 302 *** | gloss 80-95

semi gloss | 138/10008
Railing White | gloss 55 - 65

fine texture | 138/10038
Railing White FT **NEW**

satin | 138/10130
Seashell White *** | gloss 26-35



satin | 138/10070
Bone White *** | gloss 22-32

glossy | 138/10090
Extrusion White *** | gloss 80-95

semi matte | 138/11401
Pompano White *** | gloss 40-50

glossy | 138/70032
Grey Classic 303 | gloss 80-95



glossy | 138/70054
Grey Classic 308 | gloss 80-95

glossy | 138/70061
Grey Classic 314 | gloss 80-95

satin | 138/70048
Sky Grey | gloss 26-35

satin | 138/70025
Ash Grey | gloss 26-35



satin | 138/70049
Grey | gloss 26-35

matte | 138/70100
Fashion Grey | gloss 20-30 **NEW**

satin | 138/70019
Slate Grey | gloss 20-30

satin | 138/70070
Taupe *** | gloss 26-35



satin | 138/70780
Charcoal Grey | gloss 26-35

satin | 138/80145
Wrought Iron **NEW** | gloss 30-40

semi gloss | 138/70110
Railing Grey | gloss 55-65 **NEW**

fine texture | 138/70111
Railing Grey FT **NEW**

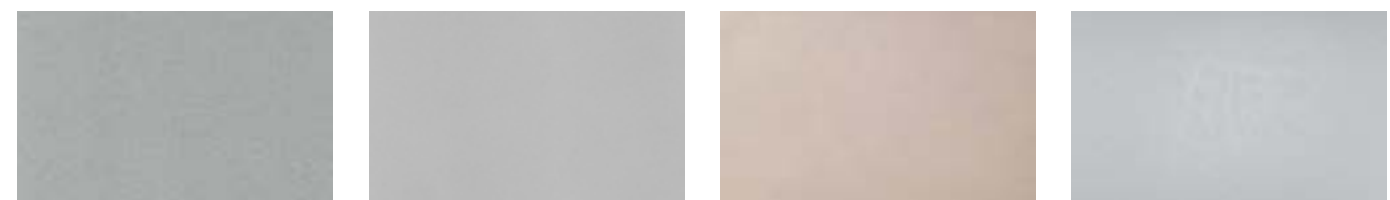


metallic | 138/90007
Argento 305

metallic | 138/90009
Argento 307

metallic | 138/90011
Argento 308

metallic | 138/90080
Brilliant Sparkle Silver ** | ***



metallic | 138/99999
Bengal Silver SD ***

metallic | 138/91021
Anodized Silver

metallic | 138/97445
Starline Standard Silver

metallic FT | 138/90030
Tuscan Silver **NEW**

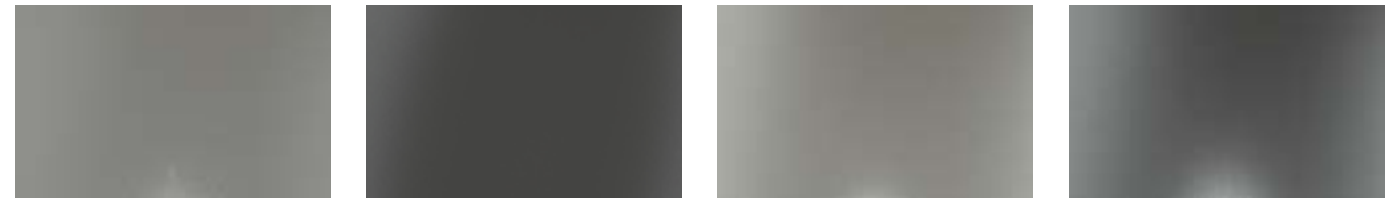


metallic | 138/90015
Ca. 9023 Pearl Dark Grey SD

metallic | 138/90016
Argento 312

metallic | 138/70190
P 2 Glimmer SD **NEW**

metallic | 138/70200
P 3 Glimmer SD **NEW**



metallic | 138/70220
P 4 Glimmer SD **NEW**

metallic | 138/80180
P 5 Glimmer SD **NEW**

metallic | 138/70210
P 6 Glimmer SD **NEW**

metallic | 138/80190
P 7 Glimmer SD **NEW**



metallic | 138/70230
P 14 Glimmer SD **NEW**

metallic FT | 138/70789
DB 702 Glimmer SD **NEW**

metallic | 138/84340
DB 703 Glimmer SD **NEW**

metallic | 138/90018
Argento 314



metallic | 138/88005
Sparrow Grey

satin | 138/15003
Almond *** | gloss 26-35

satin | 138/15012
Sandstone *** | gloss 26-35

satin | 138/15002
Sierra Tan *** | gloss 25-35



glossy | 138/15005
Crème 301 *** | gloss 80-95

glossy | 138/15007
Crème 303 *** | gloss 80-95

glossy | 138/15009
Crème 305 *** | gloss 80-95

metallic | 138/15018
Champagne 302 metallic



metallic | 138/15021
Champagne 304 metallic

metallic | 138/15835
Ca. 1035 Pearl Beige SD **NEW**

glossy | 138/60026
Marrone 306 | gloss 80-95

glossy | 138/60039
Marrone 308 | gloss 80-95



satin | 138/60018
Koko Brown | gloss 26-35

satin | 138/60014
Medium Bronze | gloss 20-30

metallic | 138/68195
Sun Kissed Bronze **NEW**

satin | 138/60080
Statuary Bronze | gloss 26-35

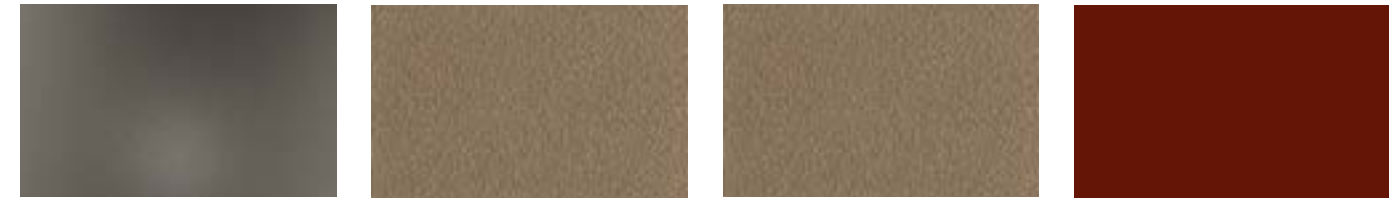


satin | 138/60090
Dark Anodized Bronze | gloss 25-35

metallic | 138/60060
Medium Bronze Metallic

metallic | 138/96021
Neptune Bronze

metallic | 38/68008
Spartacus Bronze



metallic FT | 138/68020
Americano **NEW**

metallic FT | 138/68192
Gold Brown

metallic FT | 138/68130
Greco

satin | 138/30041
Redwood | gloss 26-35



matte | 138/30028
Brick Red | gloss 16-25

fine texture | 38/60499
Weathered Steel Ambra

metallic | 138/20014
Deore 302 Metallic ***

metallic | 138/68015
Venetian Copper



metallic | 138/60064
Ca. 8029 Pearl Copper SD

glossy | 138/20161
Caution Yellow | gloss 80-95

glossy | 138/50039
Highland 305 | gloss 80-95

glossy | 138/50040
Highland 306 | gloss level 80-95



glossy | 138/50041
Highland 307 | gloss 80-95

satin | 138/50080
Ivy Green | gloss 26-35

satin | 138/50037
Classic Green | gloss 20-30

satin | 138/50110
Hartford Green | gloss 26-35



matte | 138/60006
Aged Copper | gloss 15-25

matte | 138/41930
RAL 5011 Steel Blue **NEW** | gloss 20-30

glossy | 138/40033
Azzurro 307 | gloss 80-95

matte | 138/49940
RAL 5013 Cobalt Blue **NEW** | gloss 20-30



matte | 138/40025
Interstate Blue | gloss 15-25

metallic | 138/40127
Ca. 5026 Pearl Night Blue SD

satin | 138/40051
Military Blue | gloss 20-30

matte | 138/30033
Boysenberry | gloss 15-25

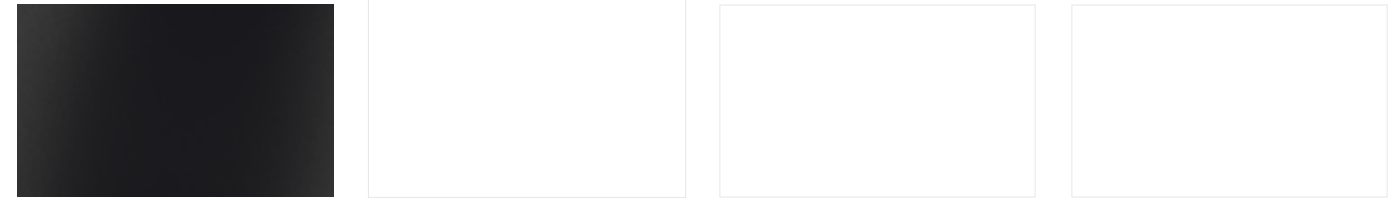


fine texture | 38/34005
Weathered Steel Viola

glossy | 138/80002
Carbon 301 | gloss 80-95

semi gloss | 138/81009
Railing Black | gloss 55-65

satin | 138/80020
Jet Black | gloss 26-35

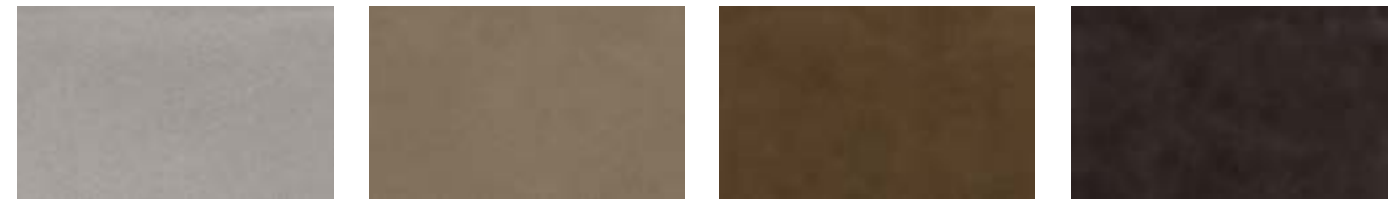


fine texture | 138/80148
Black Sandtex **NEW**

clear | 44/00110
Clear Super Flow Gloss SD **NEW**

clear | 38/00088
Clear Matte SD

clear | 38/00001
Clear High Glossy SD



anodized effect | 61/00015
Silver (clear)

anodized effect | 61/78003
Champagne Anodized Effect

anodized effect | 61/68002
Medium Bronze Anodized Effect

anodized effect | 61/68001
Dark Bronze Anodized Effect



anodized effect | 61/80079
Black Anodized Effect

BLM | 138/16500
Carlsbad Canyon Brown | gloss 55-65

BLM | 38/50500
Covert Green | gloss 55-65

BLM | 38/52600
Shale Green | gloss 55-65



BLM | 38/51400
Juniper Green | gloss 55-65

primer | 69/11001
Dryprotector White | gloss 2-6

primer | 09/73841
OGF | gloss level 65-75

primer | 69/70000
Dryprotector Primer | gloss level 1-5



Disclaimer
Color swatches featured in this document have been matched to color standards at a **45-degree visual angle under a D65 Daylight** primary source. RAL numbers are matched closely to the RAL Standards. Gloss level on metallic and fine textured swatches cannot be accurately measured.
Color swatches are considered as an indicator only. In practice, discrepancy between the color swatch and the actual powder coating may be present due to: paper and ink limitations, the influence of light and heat during the color swatch production, gloss level, substrate, surface variation, binder and pigment systems, coating thickness or cure oven conditions used during application. For better accuracy of color and finish, it is recommended to obtain a powder coated sample panel from **TIGER Drylac®**.
Semi transparent colors require a durable primer chemistry. Please contact **TIGER Drylac®** if using the following products in a two-coat system consisting of a primer or e-coat base coat: **TIGER Drylac® 138/90080 Brilliant Sparkle Silver** and/or **TIGER Drylac® 138/99999 Bengal Silver SD**.
TIGER Drylac® Super Durable products with a **fine texture finish** are recommended for use with a base coat primer.

*** To enhance the depth of finish, TIGER Drylac® recommends the application of a clear top coat. | *** Due to semi transparency of the product, the opacity of the color and finish will depend upon the substrate type and the film thickness. A film below 2.8 mils will exhibit limited hiding.